

RX 400/3 6+0 W

**Thick rubber belt for sliding plate support, with thick 6 mm top cover in type W rubber.
Total belt thickness : 9,5 mm. Available up to belt width 2.400 mm..**

Belt Composition and Technical Data

Type of Fabric	Polyester/Polyamide
Number of Plies	3
Cross-Stability	Suitable for trough
Total Thickness	9,5 mm

Temperature Range	-20°C - +80°C
Tensile Strength	400 N/mm
Min. Pulley Diameters	220 mm
Max. Prod. Width	2,400 mm
Production Process	Rotacure

Top Cover

Rubber Type	SBR/NR Rubber, type W
Thickness Top Cover	6 mm
Colour	Black
Hardness Cover	65° sh A
Profile	Not profiled

Bottom - Fabric (bare back)

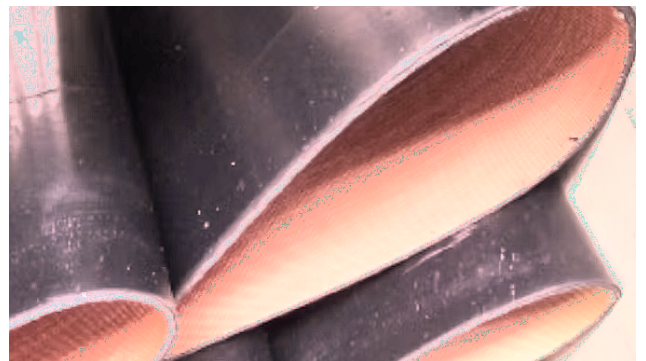
Properties Of The Belt

Anti-Static	No
Oil and Grease Resist	No
Sliding Plate Support	Yes
Idler Support	Limited
Max. Through	35°

- Available up to belt width 2.400 mm, without longitudinal joining in the rubber cover
- The thick rubber cover is made of 6 mm Rota Belting type W rubber, which is the highest anti-abrasion class.

Applications

- Heavy Duty applications on sliding sheet support, e.g. in the brick and wood industry
- Extreme applications in the composting and mushroom cultivation



ROTA BELTING.eu

SPECIALISED CONVEYOR PARTS