

# MV 400/3 3+1,5 Multi-V6

**2 ply rubber belt, with rubber running side (idler support).**  
**Cover : 3 mm rubber with the Multi-V6 (height 6 mm) profile. Abrasion resistant.**

## Belt Composition and Technical Data

Type of Fabric	Polyester/Polyamide
Number of Plies	2
Cross-Stability	Suitable for trough
Total Thickness	7,6 mm (without profile)

Temperature Range	-20°C - +90°C
Tensile Strength	400 N/mm
Min. Pulley Diameters	250 mm
Max. Prod. Width	2.000 mm
Production Process	Classic press

## Top Cover

Rubber Type	SBR/NR Rubber
Thickness Top Cover	3 mm
Colour	Black
Hardness Cover	65° sh A
Profile	Multi V-6

## Bottom

Rubber Type	SBR/NR Rubber
Thickness	1,5 mm
Colour	Black
Hardness Cover	65° sh A
Profile	-

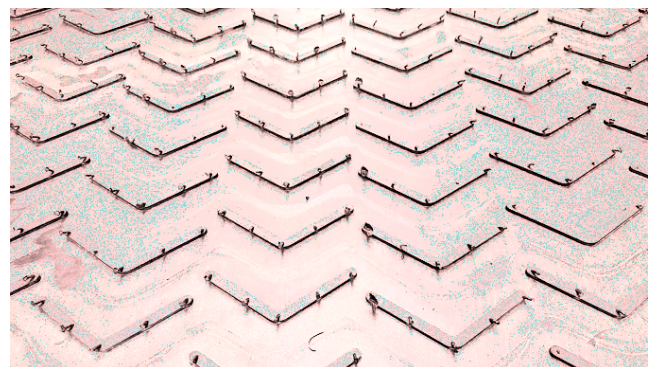
## Properties Of The Belt

Anti-Static	Yes
Oil and Grease Resist	No
Sliding Plate Support	No
Idler Support	Yes
Max. Through	30°

- Wear resistant
- We can cut the Multi-V6 profile, both sides of the belt, away, to facilitate the belt being used with side skirting
- The V6 profile runs smooth on the return rollers of the installation

## Applications

- Harvesting and Agro Food Industry
- Logistics applications
- Applications in the mineral industry (sand, gravel, ...)



# ROTA BELTING.eu

SPECIALISED CONVEYOR PARTS